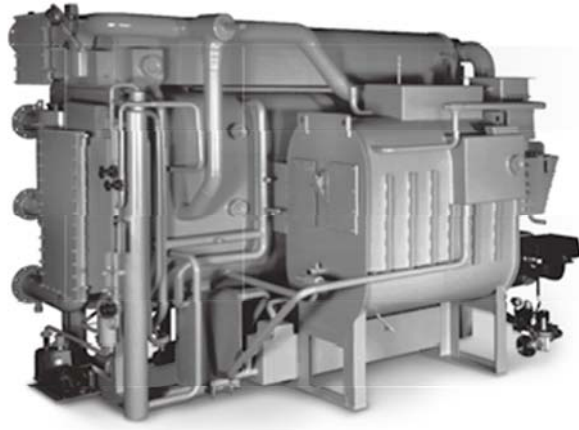


COMPANY PROFILE

THERMOTECH GREEN PRODUCTS

Your Trusted Partner on Co-Generation and Industrial HVAC System



LG ABSORPTION CHILLER



LG CENTRIFUGAL CHILLER

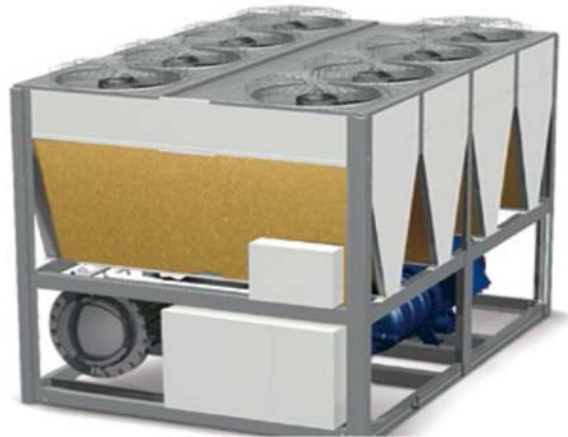


LG OIL-FREE MAGNETIC BEARING CENTRIFUGAL CHILLER





LG WATER COOLED SCREW CHILLER



LG AIR COOLED SCREW CHILLER





GETABEC GAS BOILER



GETABEC DOUBLE FLAME TUBE BOILER



SPC SERIES ROUND TYPE COOLING TOWER.



SQC SERIES CROSS WOOD
STRUCTURED COOLING TOWER

CONTENTS

Chapter- I General

1. Company Name
2. History
3. Office Address
4. Nature of Business
5. Number of Engineers

Chapter–II Foreign Business Partner

1. Name of the Foreign Business Partner
2. Products Description

Chapter – I

1. COMPANYNAME: **THERMOTECH GREEN PRODUCTS**

2. History: Established in 2011

3. Office Address:

RUPAYAN SHOPPING SQUARE

Floor 7/F. Block-G

Bashundhara Residential Area, Dhaka- 1229

Phone: +88-02-8418017, +88-02-8418018, +88-02-8418019

+880-9678-164164, Fax: 88-02-8418016,

E-mail: service@safinternationalbd.com

Website: www.thermotechgp.com

4. Nature of Business:

- Air-conditioning (Comfort & Industrial)
- Co-generation & process cooling
- Chilling

5. Manpower:

Number of Engineers : 08

Number of Technicians : 20

Working Team when turnkey (Done by sub contract/hired team)

Chapter – II

1. Name of the Foreign Business Partner

LG Electronics Inc for

- LG Absorption Chiller Machinery (Former Name LG Cable) Korea
- LG Bus Bar System (Former Name LG Cable) Korea
- LG Control System & Instrumentation Cable. (Former Name LG Cable) Korea

a

German– Thai Boiler Engineering Cooperation Ltd. for

- GETABEC Waste Heat Recovery Boiler, Thailand
- GETABEC Three Pass Wet Back Gas Boiler, Thailand

SPACCO Cooling Tower, Thailand

GLACIER Cooling Tower, Thailand

Mas Daf Pumps, Turkey

GLACIER FCU / AHU

FRIMEC FCU/AHU

Other accessories

Outsourcing: - Local Market

Introduction

THERMOTECH GREEN PRODUCTS is a private limited company established in the year 2011 and since then performing business in HVAC System & Co-generation after sales service using the following famous brand of equipment for HVAC & Co-generation represented by **SAF INTERNATIONAL**:

LG Absorption Chiller

By LG Electronic Inc. Korea

- LG Hot Water Absorption Chiller.
- LG Steam Fired Absorption Chiller.
- LG Direct Fired Absorption Chiller.

LG Electrical Chiller

By LG Electronic Inc. Korea

- LG Electrical Chiller.
- LG Centrifugal Chiller.
- LG –Oil Free Magnetic Bearing Centrifugal Chiller.
- LG Water Cooled Screw Chiller.
- LG Air Cooled Screw Chiller.
- LG Scroll Chiller.

German– Thai Boiler Engineering Cooperation Ltd. for

- GETABEC Waste Heat Recovery Boiler, Thailand
- GETABEC Three Pass Wet Back Gas Boiler, Thailand
- Heat Exchanger, Economizer SONDEX Denmark, (Thailand)
- Rice Husk Boiler
- Coal Fired Boiler

Spacco Cooling Tower, Thailand

We provide engineering and after sales services on our sold plant/ equipment and outsourcing of our equipment or machinery only to facilitate our customer at their convenient, reliable and comparative range.

We request our entire local entrepreneur to have services, expertise for their plant & industry. We are sure to achieve your satisfaction.

THERMOTECH's all management and staffs are always willing to welcome the guidance, advice, comments and direction of any kinds from the valuable customers with kind support and cooperation.

2. Products Description

a) LG Absorption & Centrifugal Chiller:

Brand: **LG Electronics Inc., Korea**

LG Electronics is No.1 cable maker in Korea and its business fields are Electric Power, Component and machinery. Also, LG Electronics is creating new businesses particularly in component and materials industry. LG Electronics makes its best to accomplish the vision, 'Your No. 1 Creative Partner and be one of the world leaders with high technology and best level of service.

With over 50% domestic market share, LG Electronics has provided heating, ventilating and air conditioning total solution to industrial and commercial fields over 30 years. Now the company, specialized in absorption, centrifugal & GHP, now want to share its leading technology with the global friends.

The LG Absorption Chillers have always been nation's No.1 energy saving chillers, since the company has considered R&D as frontier mover of all.

Types of Chiller:

1. LG Steam Fired Absorption Chiller (Double and Single effect)
2. Driven by Steam
3. LG Direct Fired Absorption Chiller (Double and Single effect)
4. Driven by Natural Gas
3. LG Hot Water Fired Absorption Chiller (Single effect)
Driven by Hot Water from Jacket Water of the Generator.
4. LG Centrifugal Chiller
5. GHP (Gas driven Heat Pump)
6. LG AHU (Air Handling Unit) / FCU (Fan Coil Unit)

Advantages of LG Absorption Chillers

Beneficial where cooling / heating demands are all year around by using diversified energy sources

such as Gas, Steam and Hot water.

Reduces operation cost where in electrical cost is high.

Utilizing environmental safe, non-chlorine mixture based refrigerant.

Reduces greenhouse effect by less using hydrocarbon fuels as well as electricity.

b) Spacco Cooling Tower:

Brand: Spacco Cooling Tower Industries Co. Ltd., Thailand.

Manufacturer of All Kind of Counter Flow and Cross Flow Fibre Glass, Wood and Concrete Cooling Towers

Nation wide Services.

Complete Cooling Tower Inspection.

Cooling Tower Repairs and Maintenance.

Structural Analysis and Designing.

Cooling Tower Upgrading.

Supplier of Spare Parts of All kinds of Cooling Tower,

Specially Fillers and Fibre Parts.

New Models (Box Type) are Extremely Low Maintenance, Energy Saver,

Low Noise, Low Space,

Water Saver and Having Low Drift Loss.

The advantages of the STA-Sun series due to another are:

1. Energy saving

The fan power consumption is greatly reduced by the lower pressure loss filler together with the belt- mounted fan stack.

2. Space-saving, light weight and package unit

Operating weight, installation space and time are lower than the conventional types since our higher-heat-exchange-rate filler

3. Low noise level

STA series satisfy the standard noise level specified by JCI and CTI.

4. Anti-corrosiveness

All the main components are made of the anti-corrosive materials such as FRP and HDG steel.

5. No requirement of any special foundation

All the units supply with the standard footing so the very simple foundation is required.

6. Fire proof material

All the units are constructed with FRP-the fireproof material.

7. Quake proof design

Our standard design is based on 1.0thdegree and 0.5thdegree vertical. Any other specification and design are available.

c) SHELL BOILERS AS GETABEC THREE-PASS BOILERS

The shell boiler as a three-pass flame-tube smoke tube boiler (in short: "three pass boiler") is the boiler design most commonly produced world wide for medium performance ranges.

Meanwhile it has become regarded as the ideal construction. The GETABEC three-pass boilers we

Supply are available for a wide performance spectrum, so that we can supply the right kind of boiler to meet every requirement.

Series: HDO/HDO-D three-pass boilers (steam generators)

Series: HWO/HWO-D three-pass boilers (hot water generators)

Special construction: HDK three-pass boilers (coal)

Special construction: WHR three-pass / one-pass boilers (waste heat)

THE RIGHT SOLUTION FOR EVERY NEED

It has proved worth while to let us design a boiler unit in line with local operating conditions. We can equip complete boiler houses and power supply centers and delivers all the components needed for the generation of steam and hot water. We develop, design, manufacture and supply three-pass boilers for various applications wherever heat is needed. They are used as hot water generators just for heating purposes in domestic heating systems or for generating steam as process steam for the food and beverage industry, textile industry, hotels, chemical and petrochemical industry, feed mills etc. only to mention a few.